



Information for Teachers

Animals and Habitats

EYFS

at Flag Fen Archaeology Park

The Animals and Habitats session provides outdoor learning opportunities for children in which they can explore, engage with and understand the natural world. Through storytelling, nature play, crafts and more, the sessions provide opportunities for building positive relationships, developing imagination, physical development, expression, and increasing confidence outdoors.

Morning Activities

Woodland Friends

Set in the Forest School area of Flag Fen, we aim to bring the wonders of nature alive with a variety of animal and habitats themed outdoor learning activities. Pupils will explore our woodland area and participate in a variety of creative and problem-solving activities including:

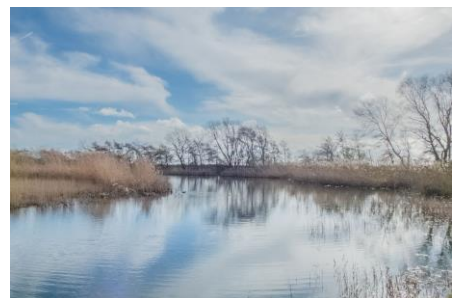
- Bug hunting
- Make a mini bug hotel
- Animal masks
- Mini den-building
- Animal clay craft
- Woodland play opportunities and more!



Afternoon activities

Pond Life: What swims in the mere?

Pupils will have the opportunity to observe what pond creatures live in the mere at Flag Fen. They will then use identification charts to identify the aquatic creatures and record what features they have that help them to live and survive in an aquatic habitat.





Storytelling activity

Get cosy in our roundhouse and listen to an animals and habitats themed story.

You have an option of choosing whether or not you would like to have a fire lit in the roundhouse for this activity.



Early Learning Goal links: Communication and Language; Physical development; Understanding the World; Expressive Arts and Design.

Learning objectives:

Participating in the 'Animals and Habitats' activities, pupils will:

- make observations about woodland animals and habitats.
- Consider why woodland wildlife and aquatic creatures are suited to their habitats.
- Begin to identify woodland wildlife and pond life.
- Gain confidence with trying new activities.
- participate in small group and whole group discussions.
- Use and explore a variety of natural materials to participate in creative activities.
- Express themselves using clay to create a woodland animal.

Other information:

Duration:	Full day: 10am- 2pm
Cost:	Full day experience: £262.50 + VAT per group of up to 30 pupils. Minimum charge for groups of less than 20 pupils is £210 + VAT. We can offer a half day experience, if this is preferred. Please contact us to discuss a half day experience.
Maximum group size:	Maximum number per group is 30 pupils. We can cater up to 2 classes. Please contact us if you wish to bring 3 classes.
Recommended ratio:	Minimum 1 adult to 6 children.
Booking information:	To book, please contact us by phone or email. When the activities and date are agreed, a booking form and risk assessment is emailed to you. To confirm the visit we ask that you complete the booking form and email it back to us.
A note about behaviour:	School teachers have overall responsibility for the behaviour of their pupils and we expect you to support Flag Fen staff with this where necessary. As you know, pupils benefit significantly when school staff and adults also get involved in the activities so please join in where appropriate.