

Information for Teachers

Jurassic Explorers

EYFS

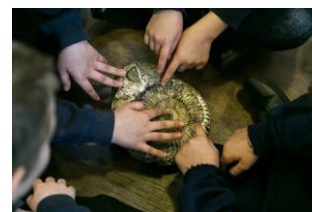
at Flag Fen Archaeology Park

Ever wondered what lies beneath the Flag Fen landscape? 160 million years ago, this area was under a shallow tropical sea, teeming with life. Step back in time and explore what creatures would have been swimming in this area during the Jurassic period.

Morning Activities

Fossil Handling

Pupils will have the opportunity to handle real Jurassic fossils to discover the fascinating Jurassic creatures that would have swam in this area 160 million years ago. They will work in small groups to consider what Jurassic creatures the fossils are from and find out what these fossils tell us about Jurassic sea creatures.



Jurassic craft activity

Pupils will consider what ammonites may have looked like when they were swimming in the tropical sea 160 million years ago. They will then implement these ideas to create their own ammonite to take away with them.



Be a Palaeontologist!

Be a Palaeontologist and use tools to uncover real fossils in our fossil dig pits. Pupils will explore the fossil-bearing Oxford Clay, extracted and brought here directly from a local quarry, to find real Jurassic fossils. They will then identify what they have found by making comparisons to the fossils handled earlier in the day.

Afternoon activities (optional)

Dinosaur Adventures

Set in the Forest School area of Flag Fen, we aim to bring the wonders of nature alive with a variety of dinosaur themed outdoor learning activities. Pupils will explore our prehistoric past through nature and participate in a variety of creative and problem-solving activities including:



Flag Fen learning department
 01733 317 988
 Email: flagfenlearning@peterboroughlimited.co.uk

Building a nest for dinosaur eggs
 Hunting for dinosaurs
 Jurassic masks
 Creating dinosaur footprints and more!

Early Learning Goal links: Communication and Language; Physical development; Understanding the World; Expressive Arts and Design.

Learning objectives:

Participating in the ‘Jurassic Explorers’ activities, pupils will:

- make observations of the fossils and the marine reptiles.
- talk about features of the marine reptiles’ environment.
- participate in small group discussions.
- explore and compare the differences between things that are living to those that are now extinct.
- Use and explore a variety of natural materials to participate in creative activities.
- Increase their knowledge of what the local area was like 160 million years ago.



Other information:

Duration:	Half day: 10am- 12.15pm or Full day: 10am- 2pm
Cost:	Half day: £210 + VAT per group of up to 30 pupils. Minimum charge of £170 + VAT per group of up to 20 pupils. Full day experience: £262.50 + VAT per group of up to 30 pupils. Minimum charge for groups of less than 20 pupils is £210 + VAT.
Maximum group size:	Maximum number per group is 30 pupils. We can cater up to 4 classes in one day.
Recommended ratio:	Minimum 1 adult to 8 children.
Booking information:	To book, please contact us by phone or email. When the activities and date are agreed, a booking form and risk assessment is emailed to you. To confirm the visit we ask that you complete the booking form and email it back to us.
A note about behaviour:	School teachers have overall responsibility for the behaviour of their pupils and we expect you to support Flag Fen staff with this where necessary. As you know, pupils benefit significantly when school staff and adults also get involved in the activities so please join in where appropriate.